



A first look at Saturday's MS-SQL worm as seen by BGP activity recorded by the RIS project

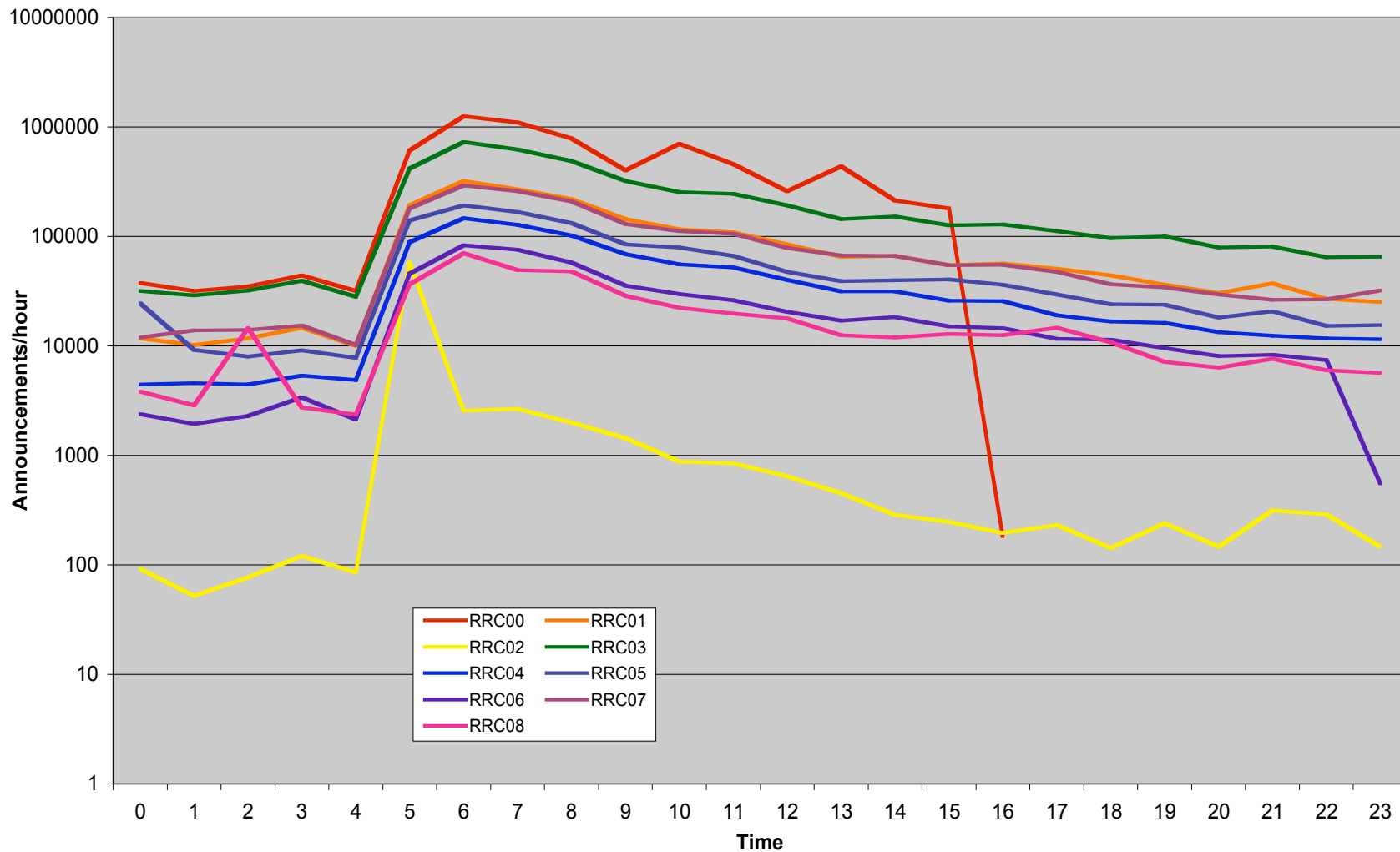
James Aldridge
Arife Vural

RIPE NCC New Projects group



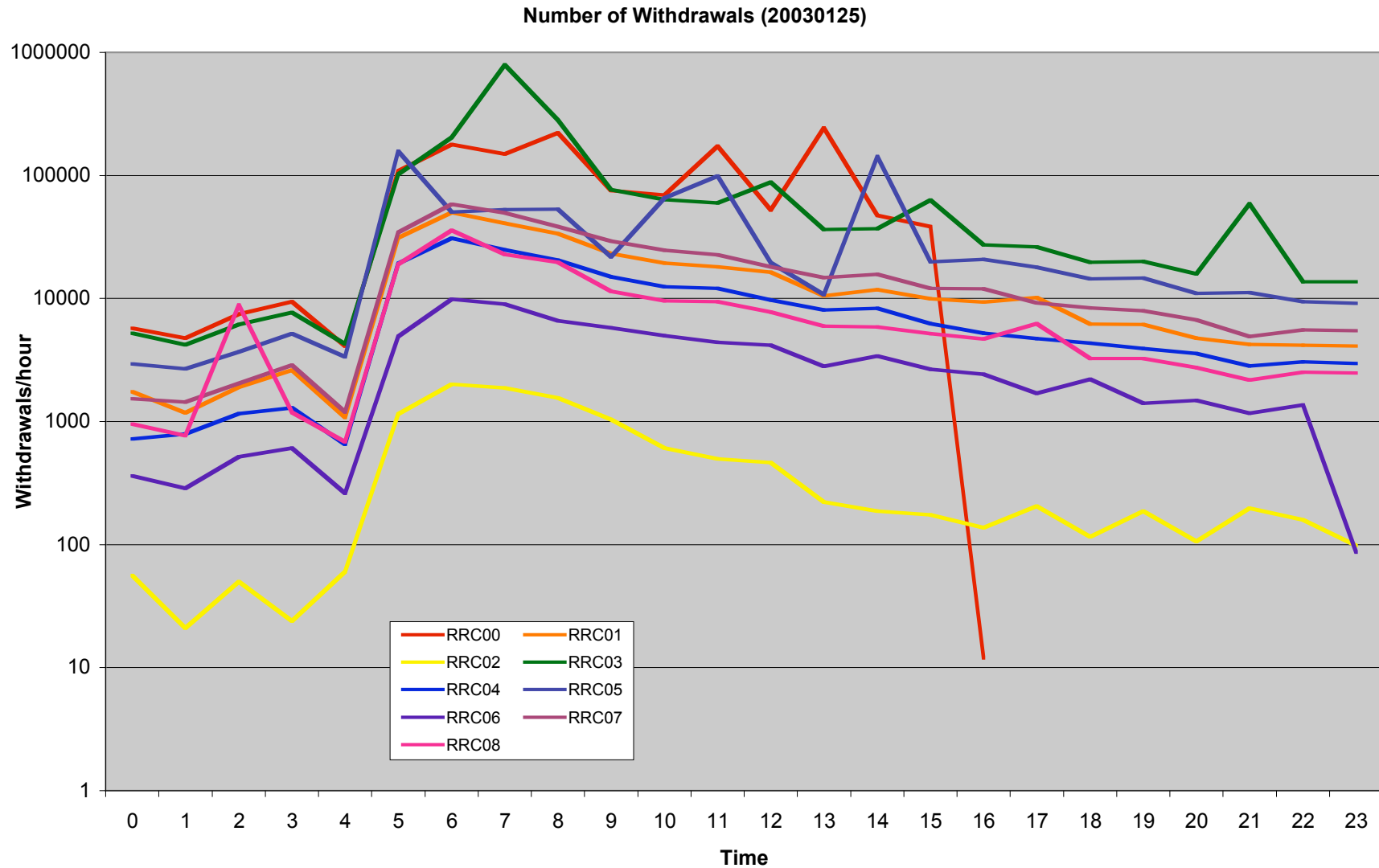
Announcement Rate

Number of Announcements (20030125)



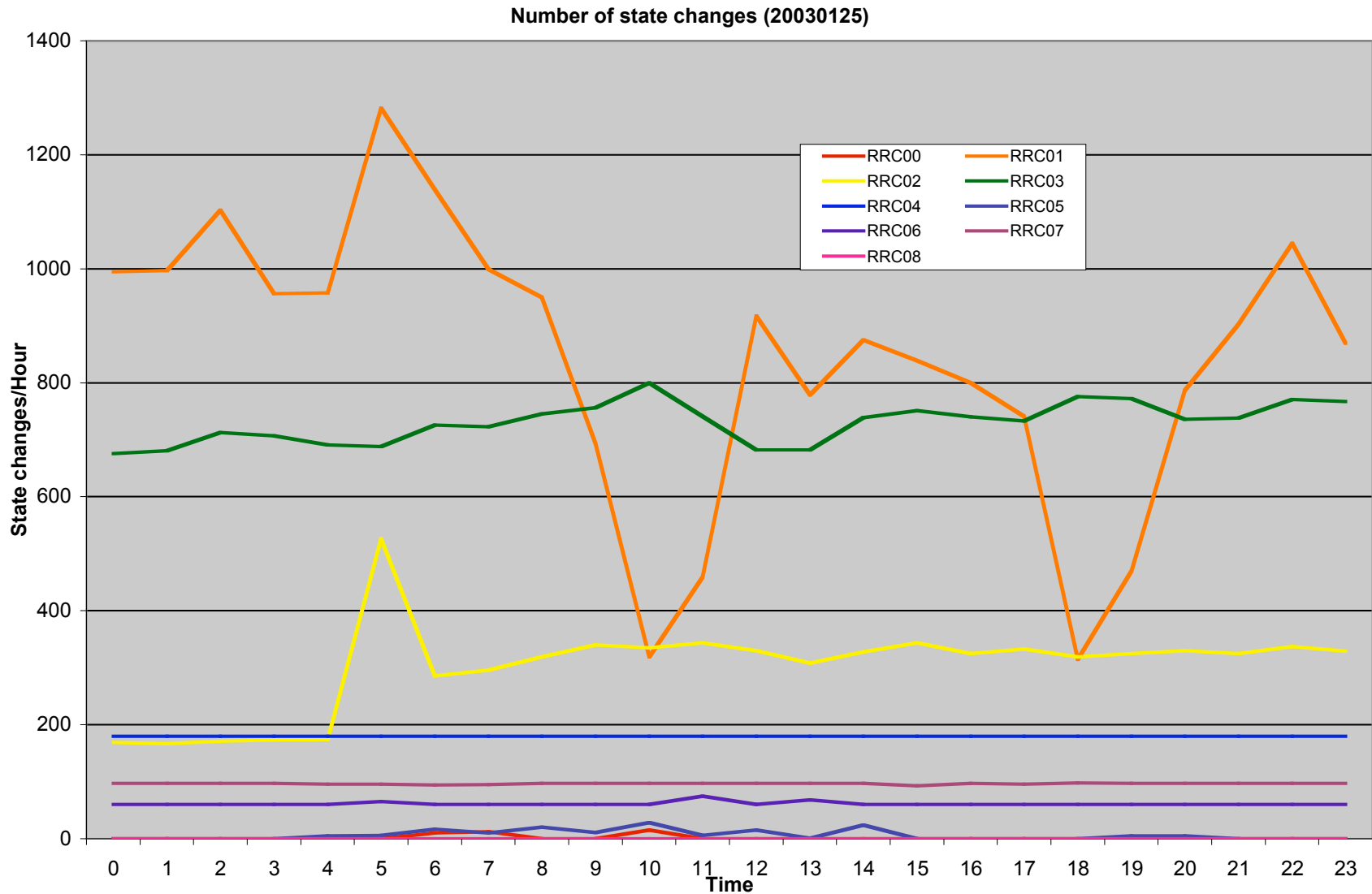


Withdrawal Rate



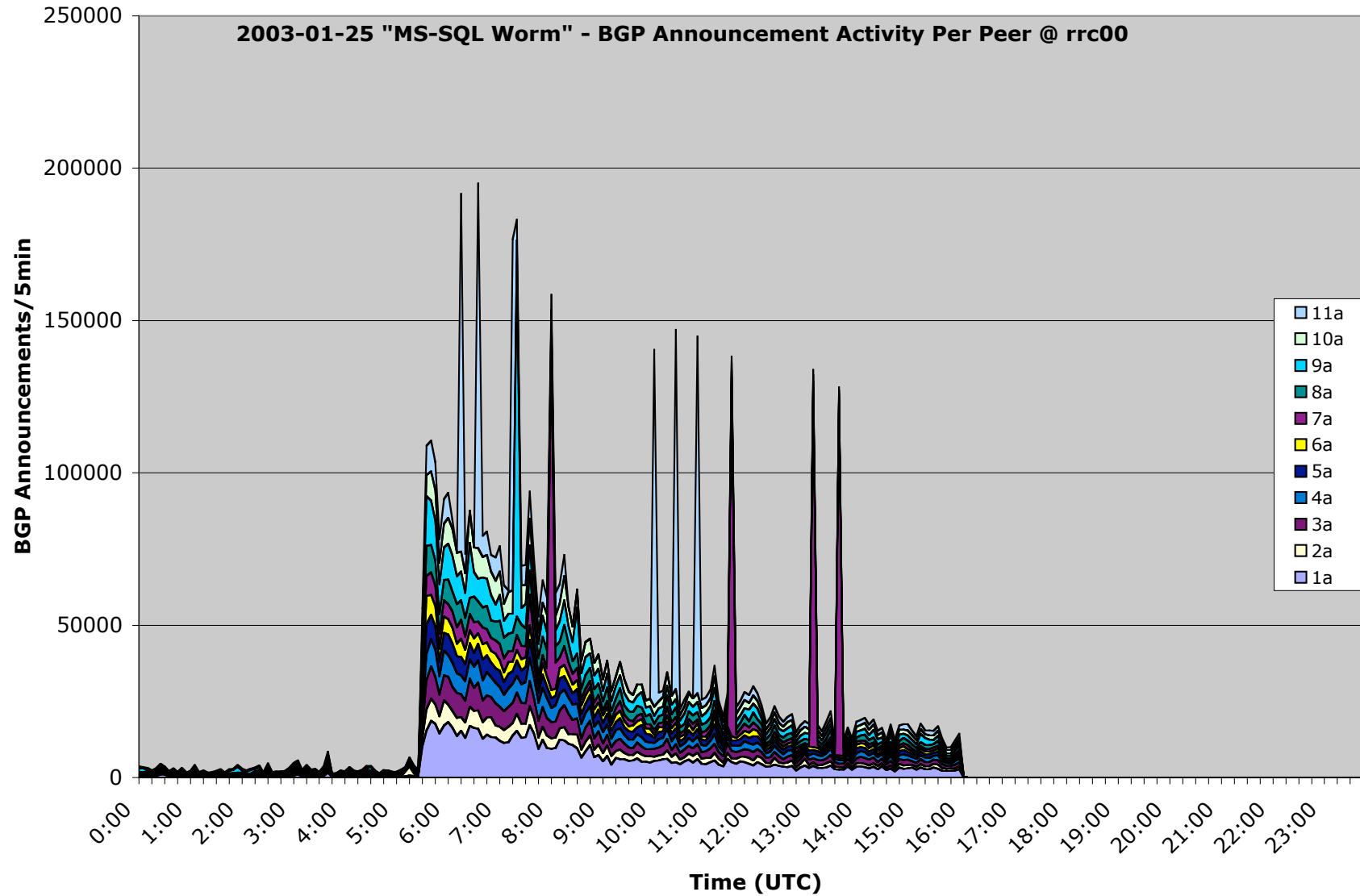


State Change Rate



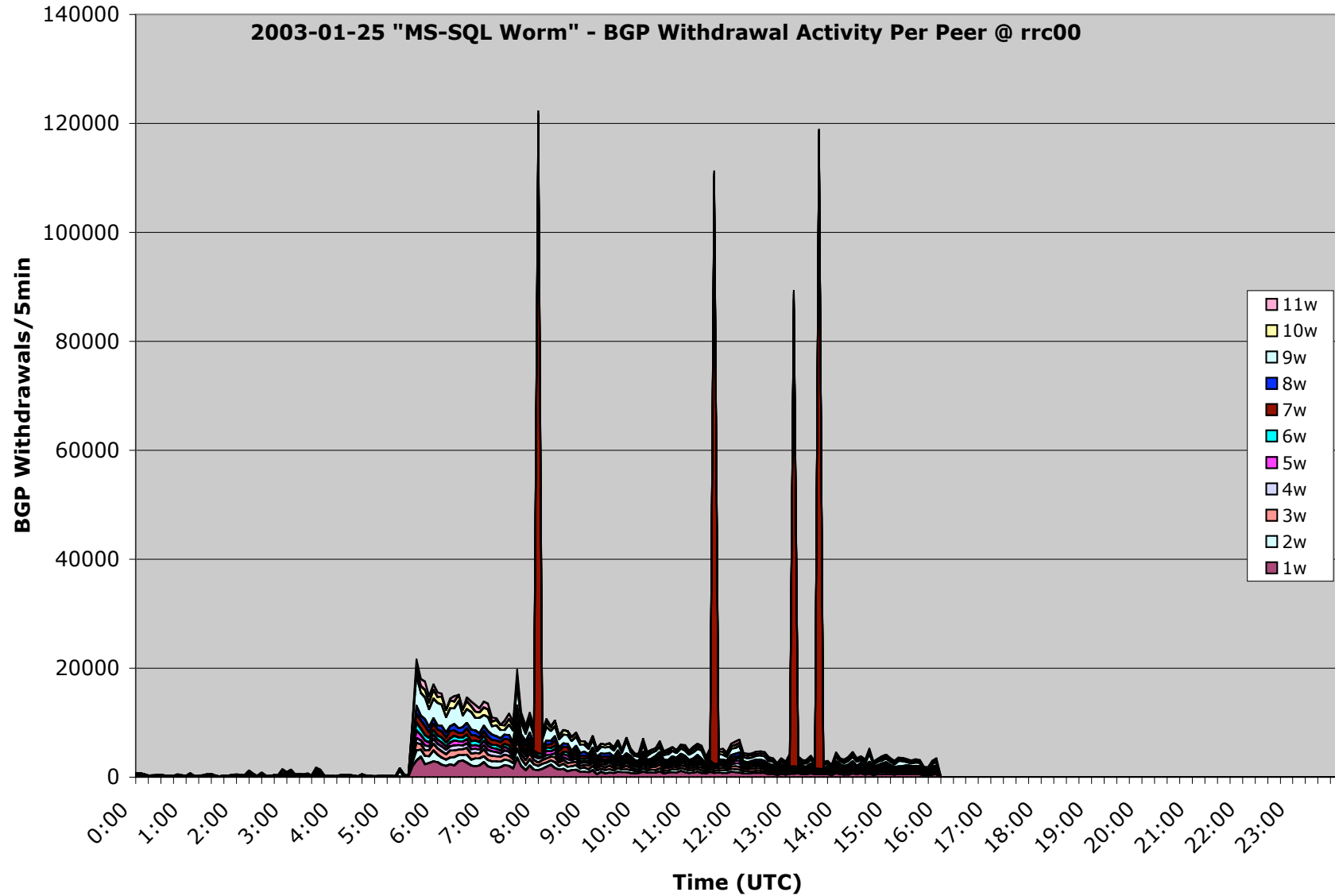


Announcements/Peer





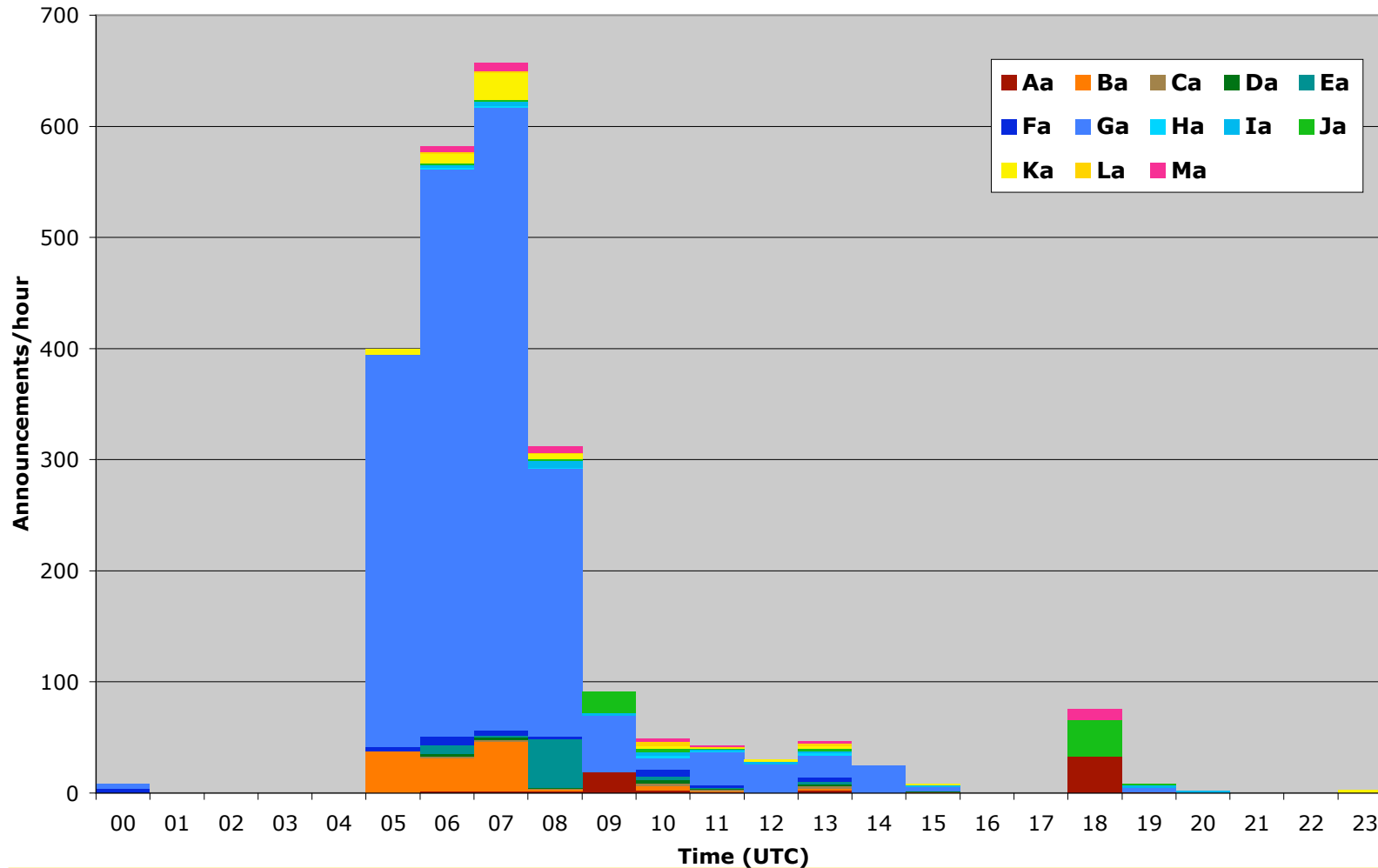
Withdrawals/Peer





Root Name Service Prefix Activity

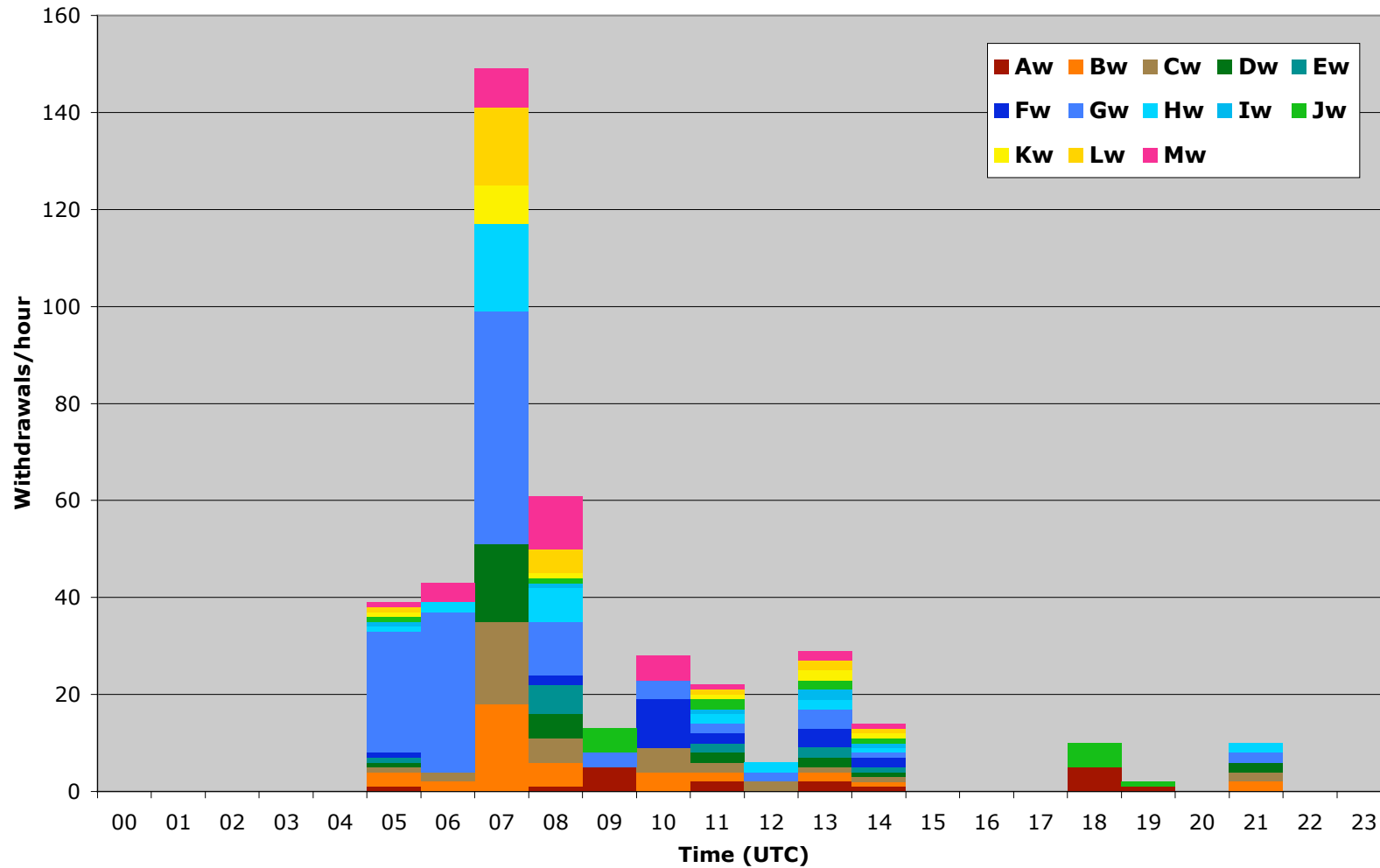
***.root-servers.net BGP Activity 2003-01-25
(ANNOUNCEMENTS)**





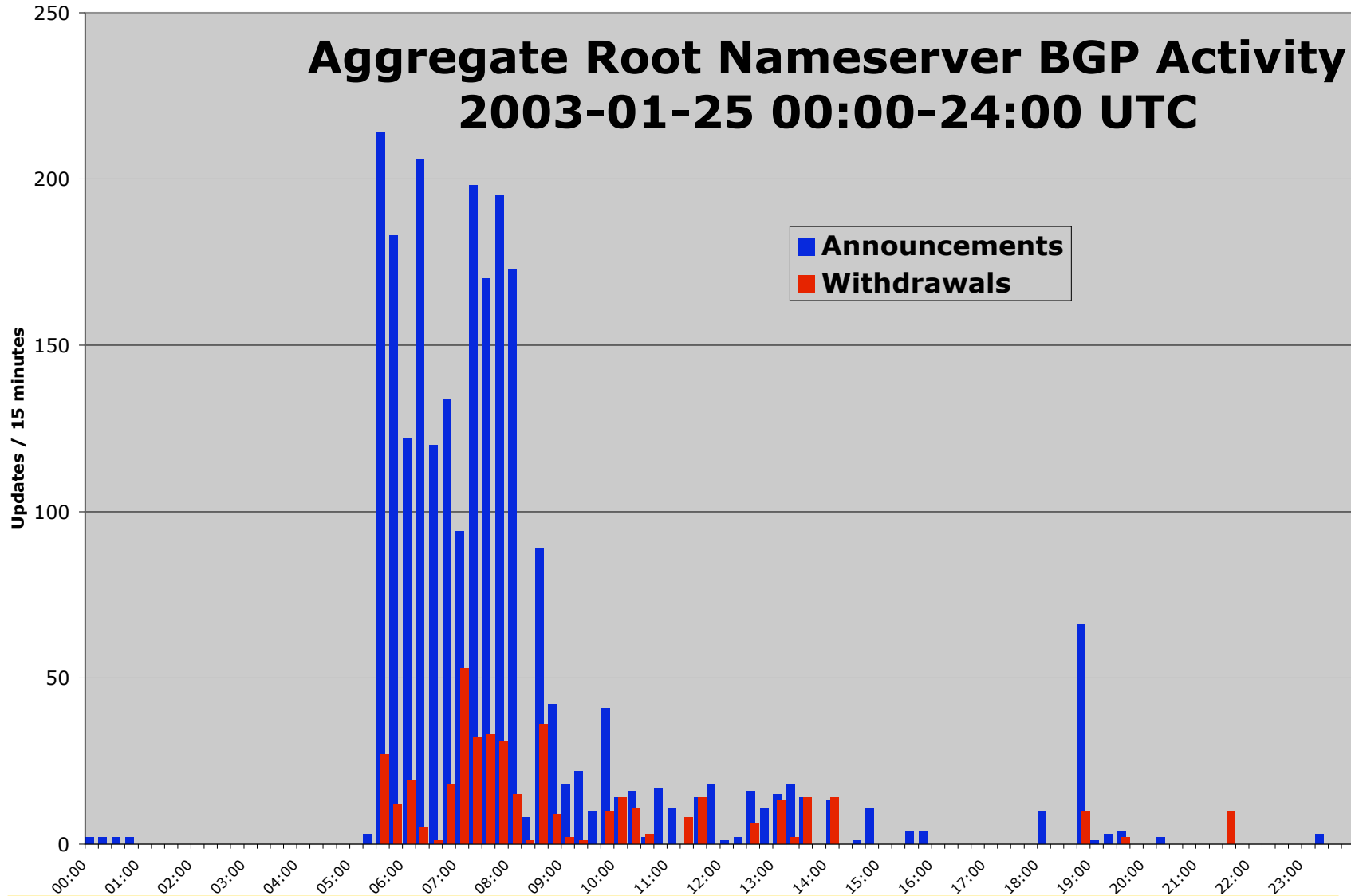
Root Name Service Prefix Activity

***.root-servers.net BGP Activity 2003-01-25
(WITHDRAWALS)**





Root Name Service Prefix Activity





Root Name Service Prefix Activity

